

**NEW!**

# Distinction 10 Pocket Pants

The Next Generation of Wool Uniforms

- ① NEW COVERT STRETCH WAISTBAND WITH REFINED CURTAIN
- ② DOUBLE HOOK AND EYE CLOSURE IN GUN METAL FINISH
- ③ TWO HIP POCKETS
- ④ TWO UTILITY POCKETS IN BACK
- ⑤ TWO GLOVE POCKETS IN FRONT



- ⑥ TWO HIDDEN CARGO POCKETS
- ⑦ TRIPLE STITCHED CROTCH PREVENTS SEAM FAILURE
- ⑧ CREASET FRONT AND BACK PERMANENT CREASES

**GREAT MATCH WITH THE  
DISTINCTION LONG SLEEVE  
AND SHORT SLEEVE SHIRTS**



Visit [www.elbeco.com](http://www.elbeco.com) to shop today with a distributor near you or learn more about Elbeco products!

JOIN THE CONVERSATION



PATTERN  
AVAILABLE

Elbeco quality products are available from Authorized Dealers. Visit [www.elbeco.com](http://www.elbeco.com) for a dealer near you.

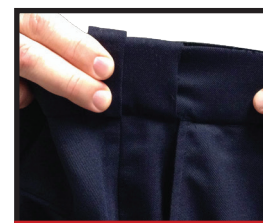


# Distinction 10 Pocket Pants

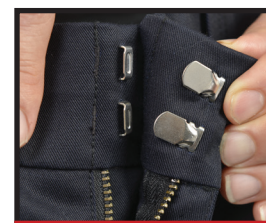
The Next Generation of Wool Uniforms

## Features:

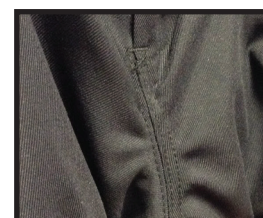
- New men's "Essential Fit" pattern with lower rise and wider leg with front rise having a slight slope
- Covert flex waistband provides 2" stretch while holding up duty belt
- Zipper and double hook and eye with gun metal finish
- Triple stitched crotch prevents seam failure
- Creaset front and back permanent creases
- Concealed zipper compartment in left front pocket
- Two utility pockets in back
- Two hip pocket
- Two glove pockets in front
- Two hidden cargo pocket
- Straight bar tacks & topstitching on all pockets
- Also available in four pocket, six pocket, hidden cargo, and external cargo styles
- Available in quarter top pocket and straight front pocket styles



COVERT  
WAISTBAND



DOUBLE HOOK AND  
EYE CLOSURE



TRIPLE STITCHED  
CROTCH



TOPSTITCHING ON  
ALL POCKETS



800-468-4654 • [www.elbeco.com](http://www.elbeco.com)

### FABRIC FEATURES

74% POLYESTER / 25% WOOL /  
1% LYCRA PREMIUM SERGE WEAVE  
7.6 OZ / SQ YD | 13 OZ / LINEAR YD  
MACHINE WASHABLE



PATTERN  
AVAILABLE

### COLORS AVAILABLE:

MIDNIGHT NAVY

MEN'S: E4024R  
WOMEN'S: E4025LC