



Water Pump w/ Advanced Filter

One Pump- Four Assembly Sizes to Meet Your Needs



Water Pump w/ Advanced Filter

One Pump- Four Assembly Sizes to Meet Your Needs.

The most field and laboratory tested filter of its kind in the world! Seychelle advanced filter technology has been used for more than a decade in the field. The technology has been tested and proven by independent government labs throughout the world to EPA/ ANSI protocols and NSF standards 42 and 53 by Broward Testing Laboratories. The filter is made in the USA.

The proprietary Ionic Adsorption Micro Filter removes up to 99.99% of a multitude of microscopic organisms such as Cryptosporidium and Giardia; and 99.9999% for bacteria, virus and Anthrax.

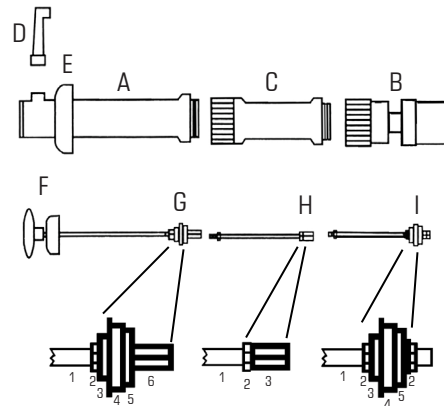
It also removes offensive taste, odors, chlorine, iodine, industrial VOC's (volatile organic compounds), PCBs, THMs (trihalomethanes), detergents, agricultural SOC's (synthetic organic compounds), pesticides, DDT, etc; and harmful heavy metals such as aluminum, cadmium, chromium 6, copper, lead, mercury, radon 222, and many others.

Unassembled, the Pump 2 Pure Pump is only 13.7 inches (35cm) long. The Pump 2 Pure Pump multi-assembly options allow you to assemble the pump in four deferent sizes depending on which size will satisfy your needs. The Pump can be used to draw water from lakes, rivers, and streams or with different size containers 2, 3, and 5 gallon bottles; 22, 50 and 55 gallon drums.

Pump 2 Pure Component List	Page 2
Assembly size options:	
7-14.9 in (18-38cm) deep - Fits 2 to 3 Gallon (7.5 to 11.3 Liters) Bottle	Page 3
22.8 in (58cm) deep - Fits 5 Gallon (18.9 Liters) Bottle	Page 4
29.9 in (76cm) deep - Fits 22 Gallon (83.2 Liters) Drum	Page 5
37.4 in (95cm) deep - Fits 55 Gallon (208 Liters) Drum	Page 6
Pump Operation Instructions	Page 7

Component List

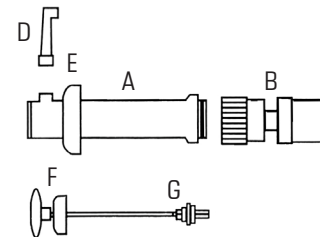
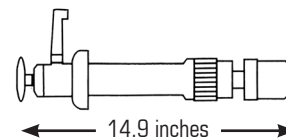
- | | |
|--------------------------------|-----------------------------|
| A. Main Tube Housing | F. Handle - Top Housing Cap |
| B. Check Valve Filter Assembly | G. Long Rod wih Piston |
| C. Extension Tubes (3X) | H. Extension Rod (2X) |
| D. Spout | I. Short Rod with Piston |
| E. Rubber Bottle Sealer | |



- | | | |
|------------------|------------------|---------------|
| - G - | - H - | - I - |
| 1. Long SS Rod | 1. Extension Rod | 1. Short Rod |
| 2. Nut | 2. Nut | 2. Nut |
| 3. Small Disc | 3. Rod Connector | 3. Small Disc |
| 4. Rubber | | 4. Rubber |
| 5. Big Disc | | 5. Big Disc |
| 6. Rod Connector | | 6. Net |

7-14.9 in (18-38cm) deep
- Fits 2 to 3 Gallon (7.5 to 11.3 Liters) Bottle

- A. Main Tube Housing
B. Check Valve Filter Assembly
D. Spout
E. Rubber Bottle Sealer
F. Handle - Top Housing Cap
G. Long Rod wih Piston



Attach (hand tight) the Check Valve/Filter Assembly (b) to the bottom of the main tube housing (a) making sure the o-ring is in place.

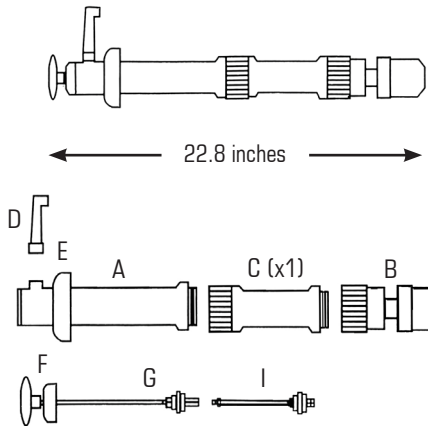
Attach (insert) the Spout (d) to the Main Tube Housing (a) it may be necessary to wet the spout for easy inserting.

Please see Pump Operation Instructions on page 7

22.8 in (58cm) deep
- Fits 5 Gallon (18.9 Liters) Bottle

- A. Main Tube Housing
B. Check Valve Filter Assembly
C. Extension Tubes (3X)
D. Spout
E. Rubber Bottle Sealer

F. Handle - Top Housing Cap
G. Long Rod wih Piston
I. Short Rod with Piston



Attach (hand tight) the Check Valve/Filter Assembly (b) to the bottom of one Extension (c) making sure the o-rings are in place.

Attach (hand tight) the top of the Extension/ Check Valve/Filter Assembly (c & b) union to the Main tube housing (a)

Remove the handle/Cap rod (f) from the Main Tube Housing (a)

Attach (hand tight) the male threads of the Short rod with the piston at the other end (i) to the female threads of the long rod (g)

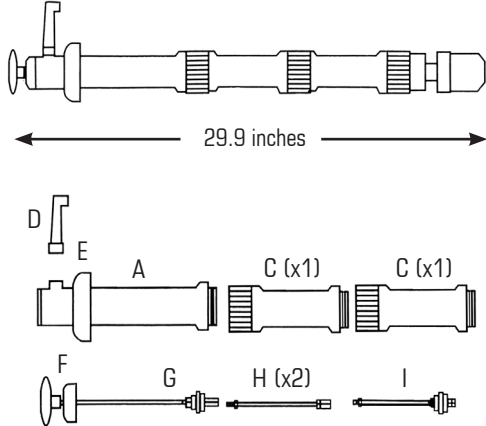
Insert (hand tight) long rod-Short rod union (g & i) back into the Main Tube Housing (a)

Please see Pump Operation Instructions on page 7

29.9 in (76cm) deep
- Fits 22 Gallon (83.2 Liters) Drum

- A. Main Tube Housing
B. Check Valve Filter Assembly
C. Extension Tubes (3X)
D. Spout
E. Rubber Bottle Sealer

F. Handle - Top Housing Cap
G. Long Rod wih Piston
H. Extension Rod (2X)
I. Short Rod with Piston



Attach (hand tight) two Extensions (c) making sure the o-rings are in place. (c + c)

Attach (hand tight) the Check Valve/Filter Assembly (b) to the bottom of the union Extensions (c + c) making sure the o-rings is in place.

Attach (hand tight) the top of the Extension/ Check Valve/Filter Assembly (c + c + b) union to the Main tube housing (a) = (a + c + c + d)

Remove the handle/Cap rod (f) from the Main Tube Housing (a)

Attach (hand tight) the male threads of the Short rod with the piston at the other end (i) to the female end of one extension rod (h)

Attach (hand tight) the male end of union rods (h + i) to the to the female threads of the long rod (g) = (g + h + i)

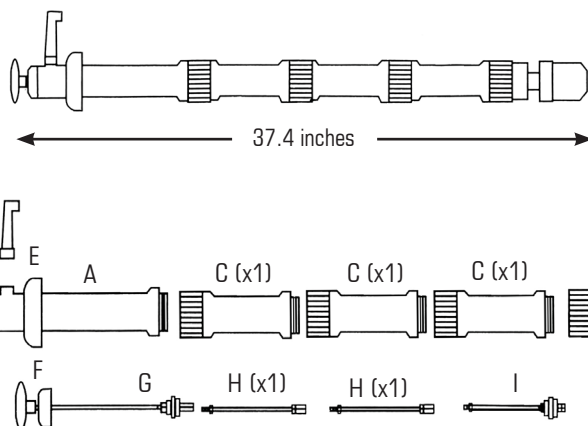
Insert (hand tight) long rod-Short rod union (g + h + i) back into the Main Tube Housing (a)

Please see Pump Operation Instructions on page 7

37.4 in (95cm) deep
- Fits 55 Gallon (208 Liters) Drum

- A. Main Tube Housing
B. Check Valve Filter Assembly
C. Extension Tubes (3X)
D. Spout
E. Rubber Bottle Sealer

F. Handle - Top Housing Cap
G. Long Rod wih Piston
H. Extension Rod (2X)
I. Short Rod with Piston



Attach (hand tight) three Extensions (c) making sure the o-rings are in place (c+c+c).

Attach (hand tight) the Check Valve/Filter Assembly (b) to the bottom of the union

Extensions (c + c + c) making sure the o-rings are in place. (c + c + c + b)

Attach (hand tight) the top of the Extension/ Check Valve/Filter Assembly (c + c + c + b) union to the Main tube housing (a) = (a + c + c + c + d)

Remove the handle/Cap rod (f) from the Main Tube Housing (a)

Attach (hand tight) one extension rod (h) together (h +h)

Attach (hand tight) the male threads of the Short rod with the piston at the other end (i) to the female end of two extension rod (h + h) = (h + h + i)

Attach (hand tight) the male end of union rods (h + h + i) to the to the female threads of the long rod (g) = (g + h + h + i)

Insert (hand tight) rods union (g + h + h + i) back into the Main Tube Housing (a)

Please see Pump Operation Instructions on page 7

Operational Instructions

When all the connections have be hand tightened and you verified that the pump assembly is the right height needed; the pump is now ready to use. Please choose the water source below: DO NOT place the unit in the freezer. DO NOT use with HOT water.

To draw water from lakes, rivers, and streams or open canisters

(14.9 inches assembly option page 3). Insert the pump into the water sources no less then 7 inch above the filter. Place one hand on the top section of the pump and one hand on the pump handle. Raise the handle 6 to 7 inches and press back down. Repeat this action until water starts to pour out of the spout (d) adjust this action to reach the desired amount of water: You may also need to adjust the angle of the pump so that water flows into a clean cup, bottle, bucket or canister.

To draw water from a 2 to 5 gallon bottles

(22.8 inches assembly option page 4) Insert the pump into the bottle and allow the filter to sit 1 inch above the bottom of the bottle; you may need to adjust the position of the rubber bottle seal (e) to adjust the section of the pump that is outside above the bottle. Please make sure that the rubber bottle seal (e) is secured around the neck of the bottle. Place one hand on the top section of the pump and one hand on the pump handle. Raise the handle 6 to 7 inches and press back down. Repeat this action until water starts to pour out of the spout (d) adjust this action to reach the desired amount of water.

To draw water from 22 or 55 a gallon drum

(29.9 or 37.4 inches assembly option page 5 or 6) Insert the pump into the drum. Place one hand on the top section of the pump and one hand on the pump handle. Raise the handle 6 to 7 inches and press back down. Repeat this action until water starts to pour out of the spout (d) adjust this action to reach the desired amount of water.

Maintenance and Storage

When the Pump system will not be used for an extended period of time, flush a small amount of chlorinated (1 tsp Chlorine) water through the filter; remove the filter assembly (a) and place on a paper towel overnight to dry. Disassemble the pump to drain any water inside the pump and allow the unit to dry. Reassemble if desired when dry and store indefinitely.

90 Day Unconditional Guarantee

Manufacturer warrants the portable water filtration system to the consumer for the period of 90 days from the date of purchase, when used in accordance with manufacturer's instructions and for the purpose intended. If there are any defect with the product, return the unit postage paid, to the distributor with a valid purchase receipt. This guarantee does not cover improper use, or maintenance, or premature clogging by overly turbid water. This warranty gives the consumer specific rights. Manufacturer shall under no circumstances be liable for any special, indirect or consequential damages owing to misuse of goods. Manufacturer makes no warranty of fitness or merchant-ability and no other warranty, oral or written, express or implied except as specifically set forth therein.