

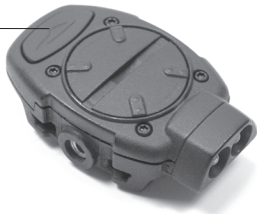
## Operation

**Single Tap** - Primary LED / low output

**Double Tap** - Primary LED / high output

**Hold** - Secondary LED / one output level

**Press** after 2 seconds to turn light off



## Battery Installation

1



2



3



4



5

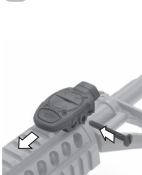


6



## Mounting

1



2



3



  
**Princeton Tec**®

**SWITCH™ RAIL**  
LOW SIGNATURE TASK LIGHT

Operating and Maintenance Instructions  
Notice d'utilisation et d'entretien  
Bedienungsanleitung

[www.princetonotec.com](http://www.princetonotec.com)

## Operating And Maintenance Instructions

### Battery Installation

See Battery Installation Diagram

- (2) 2016 coin cells

### WARNING ⚠

Remove batteries during long periods of storage. Remove exhausted batteries from light immediately.

### Switch Operation

A single press of the button turns on the primary LED in low output mode.

A double press of the button turns on the primary LED in high output mode.

Holding the button causes the secondary LED to turn on. The secondary LED has one output level. Continued holding switches back to the primary LED.

Any button press after 2 seconds turns the light off.

### Troubleshooting

If the Switch Rail fails to light:

- Check the batteries for proper installation.
- Replace batteries if proper installation is confirmed.
- Check the light for water contamination. The light will resume normal operation once the water is shaken or blown out and the light is left open until completely dry. If the light has been contaminated with salt water, flush the unit with fresh water and dry as described above.

### USA- International 1-Year Warranty

**WARRANTY** – Princeton Tec warrants this product to be free from defects in workmanship and materials under normal use for as long as you own this product. This warranty covers all of the component parts of the product except batteries. This warranty does not cover deterioration due to normal wear or damage due to misuse, alteration, negligence, accidents, or unauthorized repair. Princeton Tec will repair or replace parts which are defective in workmanship or materials.

Your authorized Princeton Tec Dealer and Princeton Tec are the only facilities authorized to repair the product. After (3) unsuccessful attempts (within the warranty period) to repair the product, you have the right to elect replacement of the product or a refund of the purchase price less allowance for use of the product. **NO INCIDENTAL OR CONSEQUENTIAL DAMAGES ARE INCLUDED IN THIS WARRANTY.** (Some states do not allow the exclusion or limitation of incidental or consequential damages, so the above limitations or exclusions may not apply to you.) This warranty gives you specific legal rights, and you may also have other rights which vary from state to state.

Princeton Tec reserves the right to change product specifications without notice.

### Return Policy

If your light fails to operate, follow these simple steps:

- 1) Check battery. Replace if necessary.
- 2) Contact Princeton Tec customer service at 800-257-9080 to request RMA number. No warranty repairs accepted without RMA number.
- 3) Return the light without batteries for repair or replacement to: Princeton Tec, 5198 Rt. 130, Bordentown, NJ 08505. Postage due and freight collect items will not be accepted.

Princeton Tec  
PO Box 8057, Trenton, NJ 08650  
Phone: 609-298-9331  
Fax: 609-298-9601  
www.princetonotec.com  
© 2013 Princeton Tec

